

# Fiery System 5.5 Technology Demo Guide: Supplement

## Setting up a System 5.5 Printer using TCP/IP Printing (RAW)

1. Download the **Printer Driver** for either **Windows 2000** or **Windows XP**.
  - **Note:** Pageflex Persona requires Windows NT, 2000 or XP. It does not support Windows 95/98/Me.
2. Open an **Internet Explorer** window.
3. Enter the **TCP/IP address** of the Fiery or the Fiery Controller **TCP/IP name** in the address field.
4. The **WebTools** window will be displayed.
5. Click the **Install** button on the left side of the window.

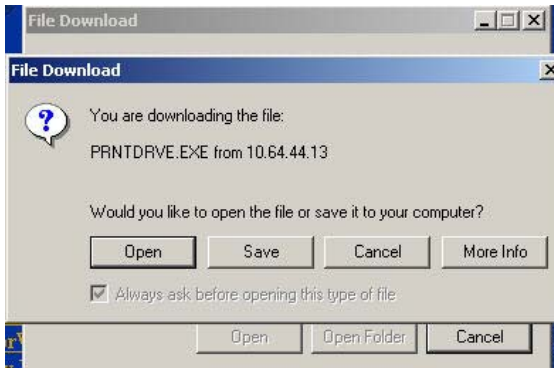
Address



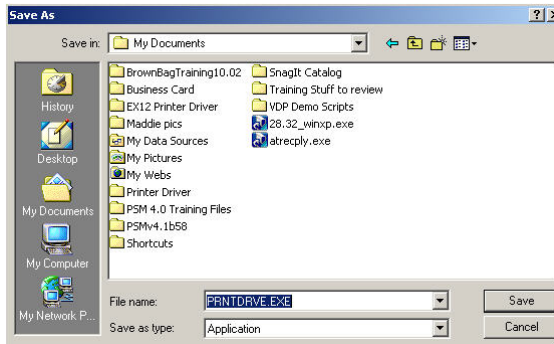
6. The **WebTools Install** window will be displayed.
7. Click on the **Printer Files** in the **Windows** area.



8. The **File Download** window will be displayed.
9. Click the **Save** button.



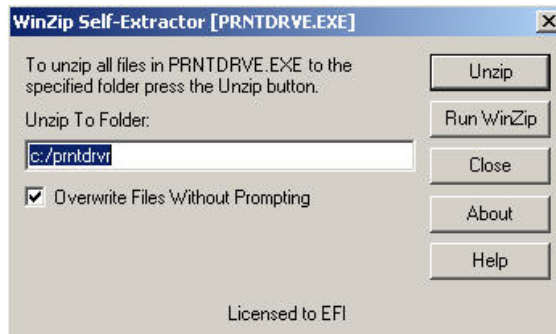
10. Save the file to the **My Documents** directory.
11. Click the **Save** button.



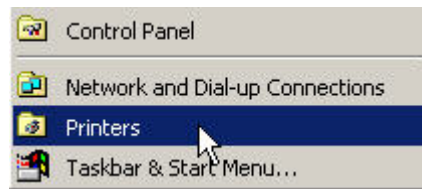
12. Open the **My Documents** folder on the desktop and locate the file **PRNTDRVE.EXE**.
13. Double click on the file **PRNTDRVE.EXE**.



14. Save the file to the directory **c:/prntdrv**.
15. Click the **Unzip** button.



16. Select the **Start** Menu.
17. Select the **Settings** menu option.
18. Select the **Printers** sub menu option.



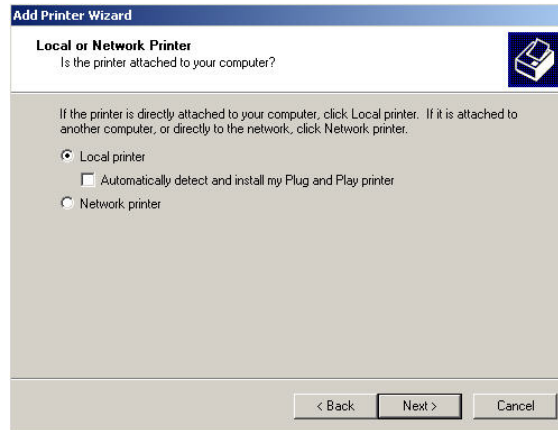
19. The **Printer Dialog** window will open.
20. Double click the **Add Printer** icon.



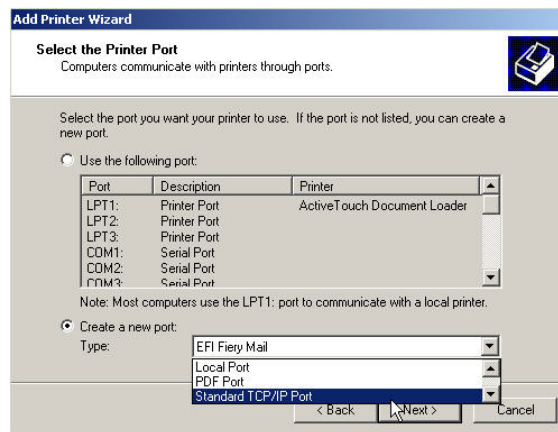
21. The **Add Printer Wizard** window will open.
22. Click the **Next** button.



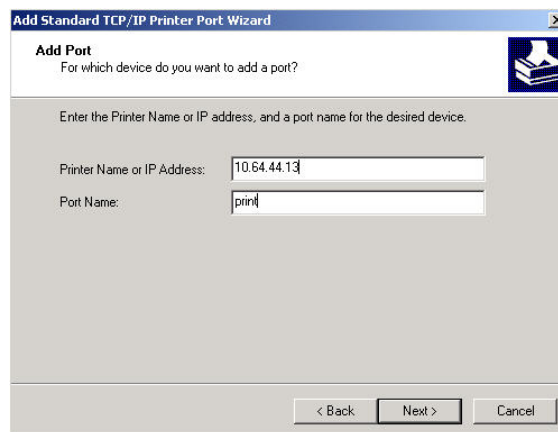
23. The **Local or Network Printer** window will open to select the connection type for the printer.
24. Select **Local printer**.
25. Click the **Next** button.



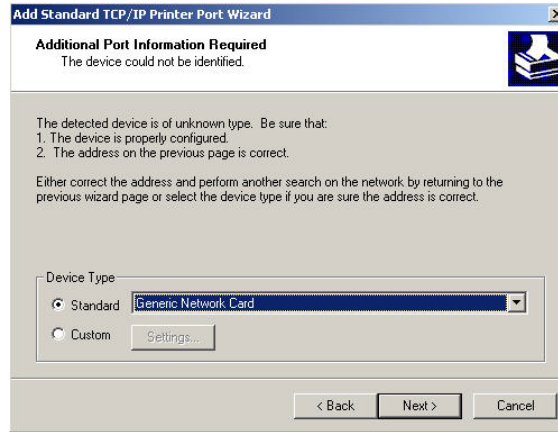
26. The **Select the Printer Port** window will open.
27. Click the **Create a new port** button.
28. Pull down the **Type** menu.
29. Select **Standard TCP/IP Port**.
30. Click the **Next** button.



31. The **Add Port** window will open.
32. Enter the **TCP/IP address** of the Fiery Controller.
33. Enter the port name **print**.
34. Click the **Next** button.



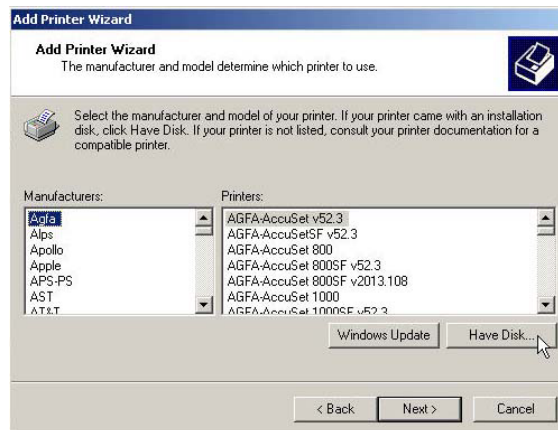
35. The **Additional Port Information Required** window will open.
36. Click the **Standard** option under Device Type.
37. Select **Generic Network Card**.
38. Click the **Next** button.



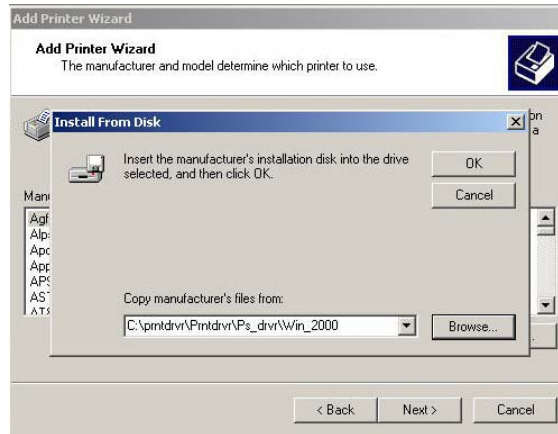
39. The **Completing the Add Standard TCP/IP Printer Port Wizard** window will open.
40. Click the **Finish** button.



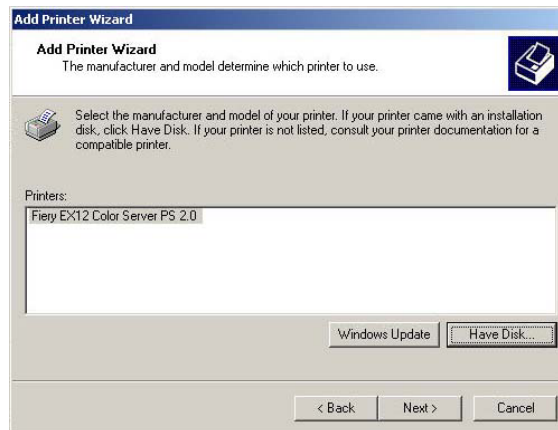
41. The **Add Printer Wizard** window will open.
42. Click the **Have Disk...** button.



43. The **Install From Disk** window will open.
44. Click the **Browse** button.
45. Select the directory **C:\prntdrv\Prntdrv\Ps\_drvr\Win\_2000** for Windows 2000 or **C:\prntdrv\Prntdrv\Ps\_drvr\Win\_XP** for Windows XP.
46. Click the **OK** button.



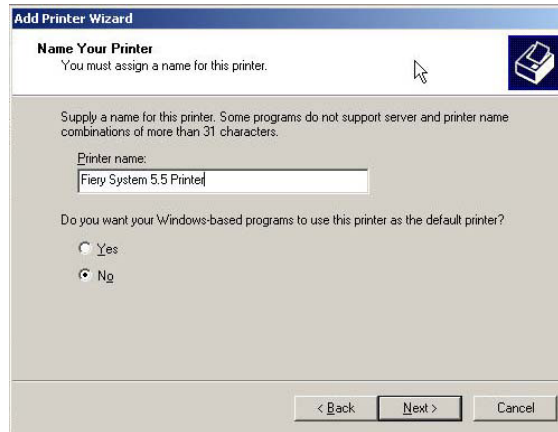
47. The **Add Printer Wizard** window will open.
48. Select the Fiery driver for the appropriate controller.
49. Click the **Next** button.



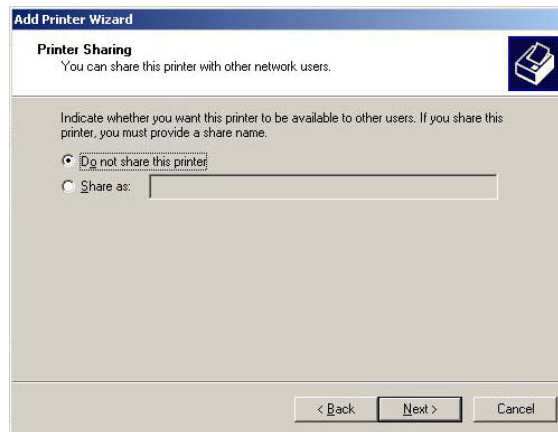
50. The **Use Existing Driver** window may appear.
51. Click the **Replace** existing driver button if this window is displayed.
52. Click the **Next** button.



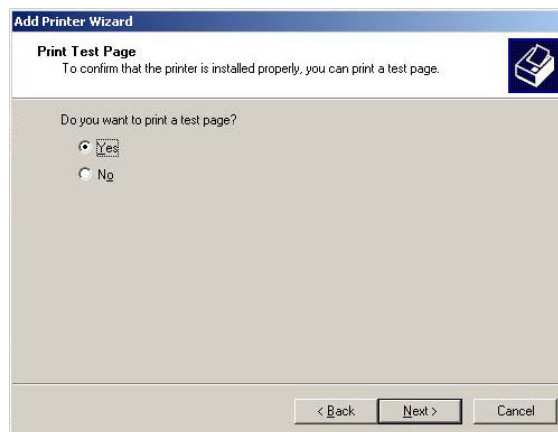
53. The **Name Your Printer** window will open.
54. Enter the **Printer name**. In this example *Fiery System 5.5 Printer*.
55. Select the **Yes** button if you want this to be your default printer.
56. Click the **Next** button.



57. The **Printer Sharing** window will open.
58. Click the **Do not share this printer** button.
59. Click the **Next** button.



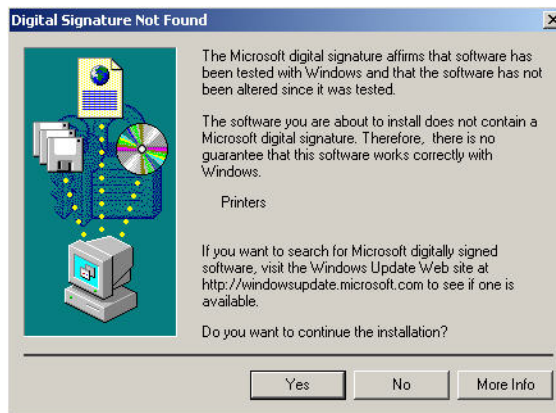
60. The **Print Test Page** window will open.
61. Click the **Yes** button to print the Test page.
62. Click the **Next** button.



63. The **Completing the Add Printer Wizard** window will open.
64. Click the **Finish** button.



65. The **Digital Signature Not Found** window may open.
66. Click the **Yes** button to continue with the installation.

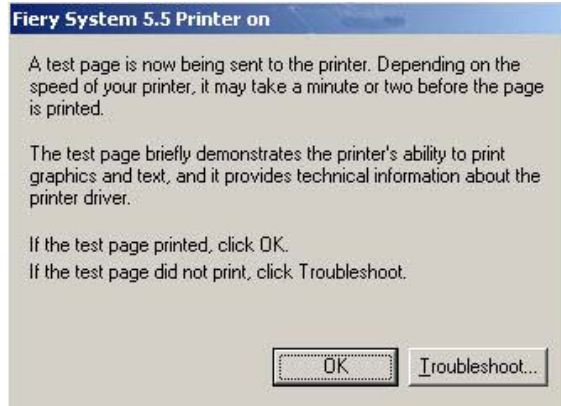


67. The **Copying Files...** window will be displayed with the status of the driver installation.





68. The **test page** window will be displayed.
69. Click the **OK** button.



70. The **Printer** will be listed in the Printer folder.



Fiery System  
5.5 Printer